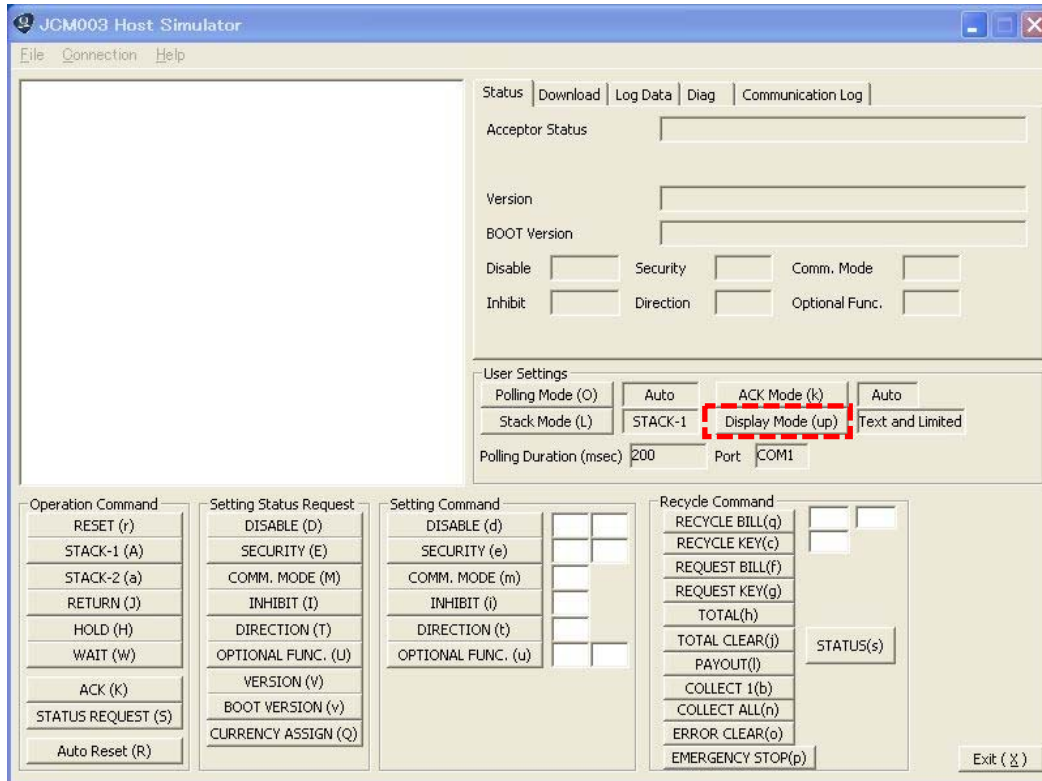
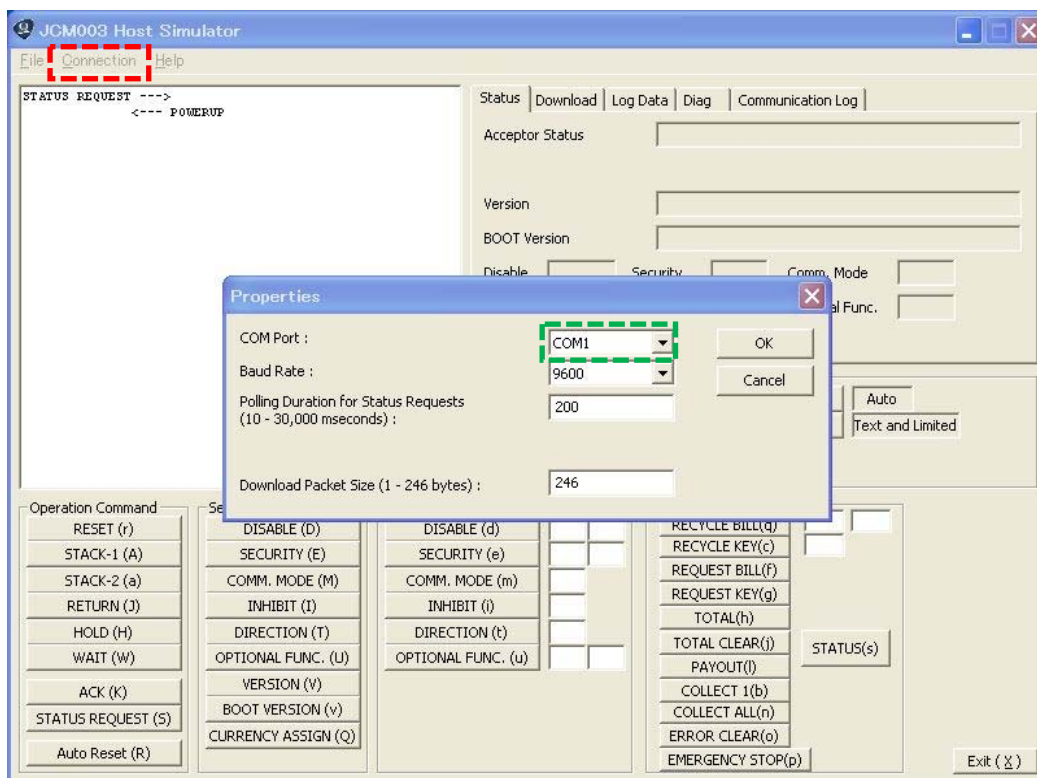


## [ID-003 Host Simulator Operation Instructions]

- (1) Start ID-003 Host Simulator.
- (2) Click "Display Mode" to change to "Text and Limited" mode.

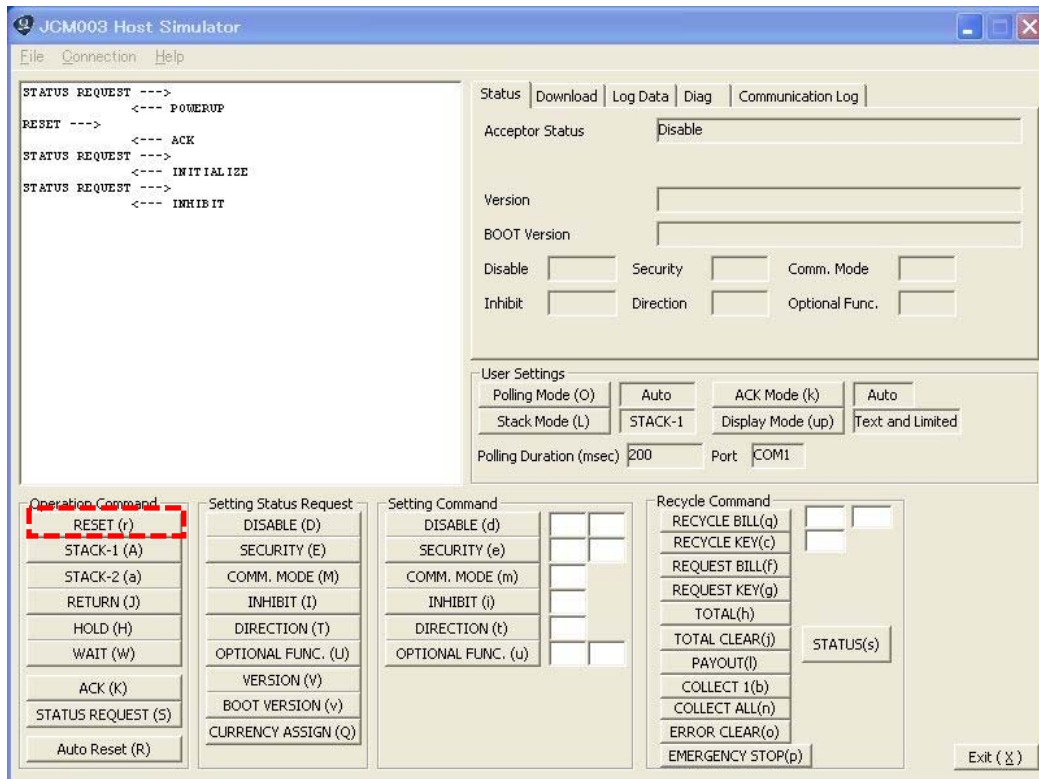


- (3) Select the COM port for your PC from "Connection" => "Properties"

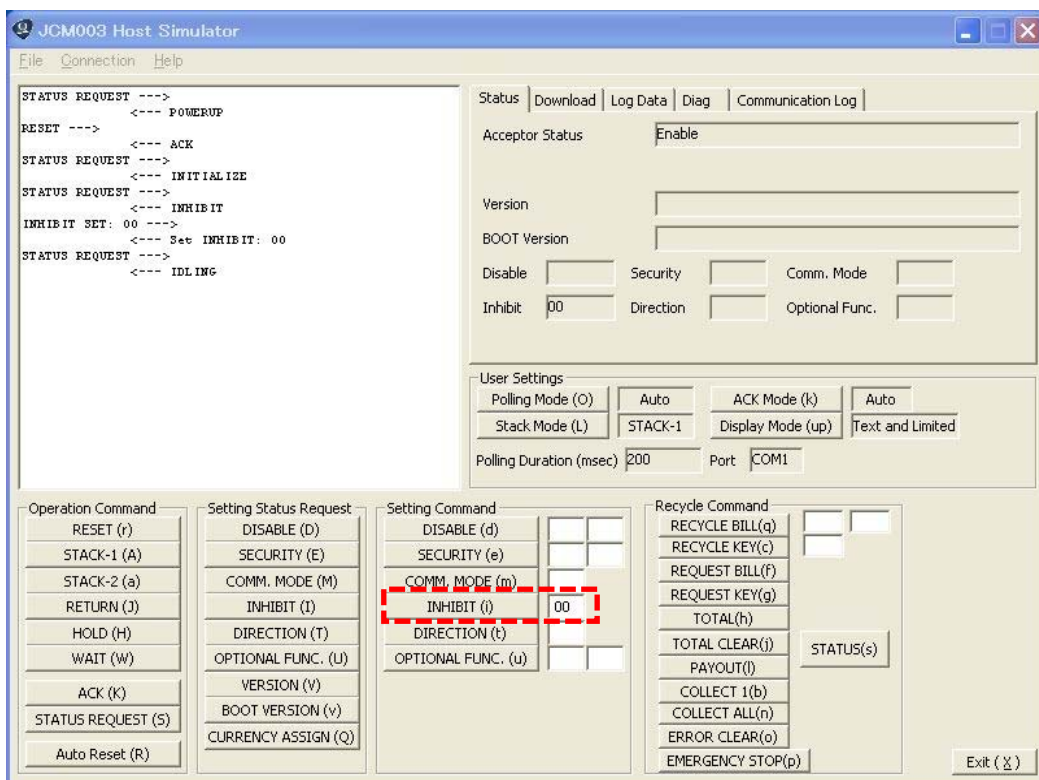


### [Inserting a banknote to be recycled]

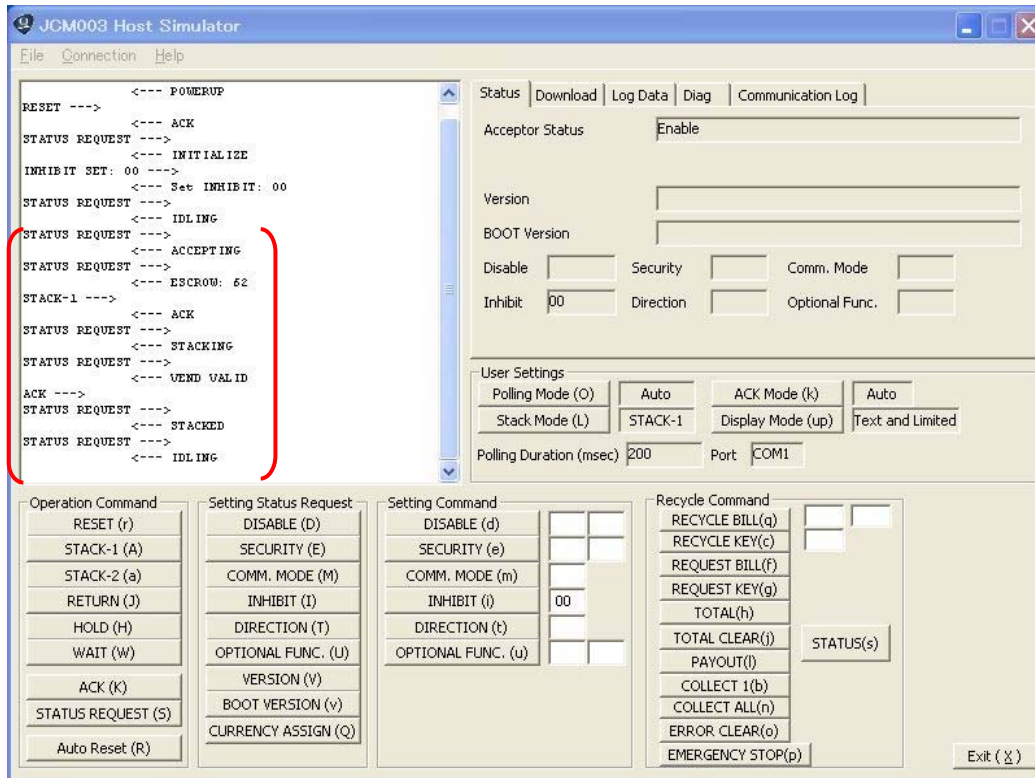
- (4) Set the dipswitch of VEGA-RC to recycler the denomination you need.  
Send RESET command to VEGA.



- (5) Clear the Inhibit status (VEGA is ready to accept banknote)

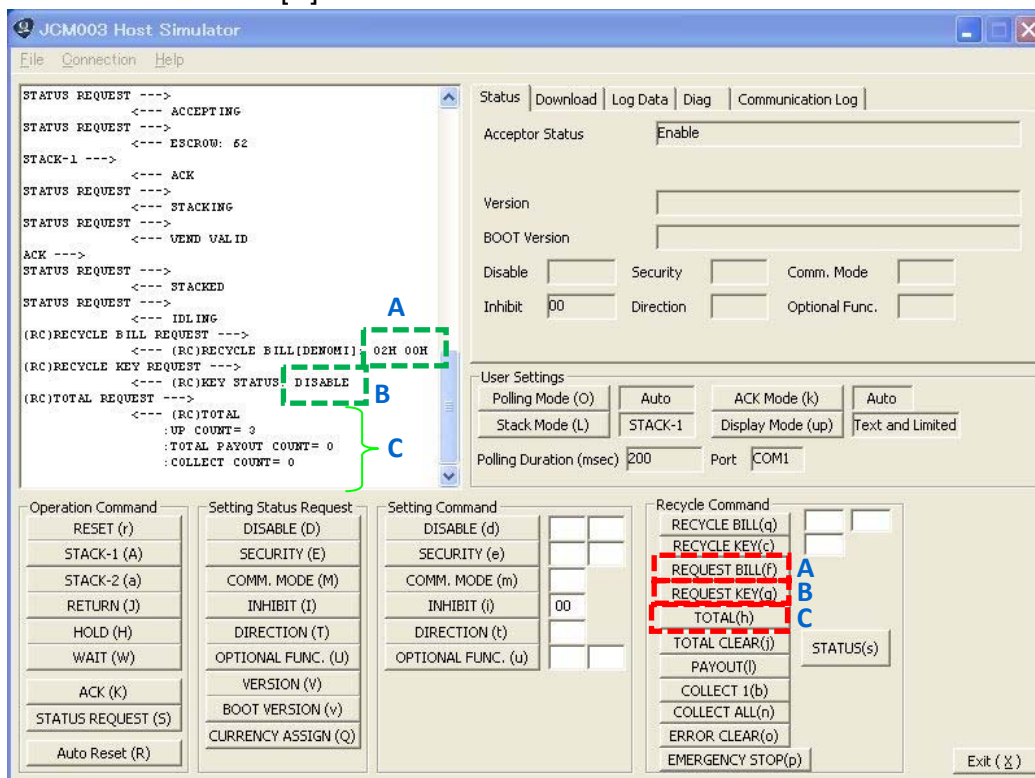


- (6) When the banknote is inserted, it is stacked into the Recycler (€ is inserted below)



### [Confirmation]

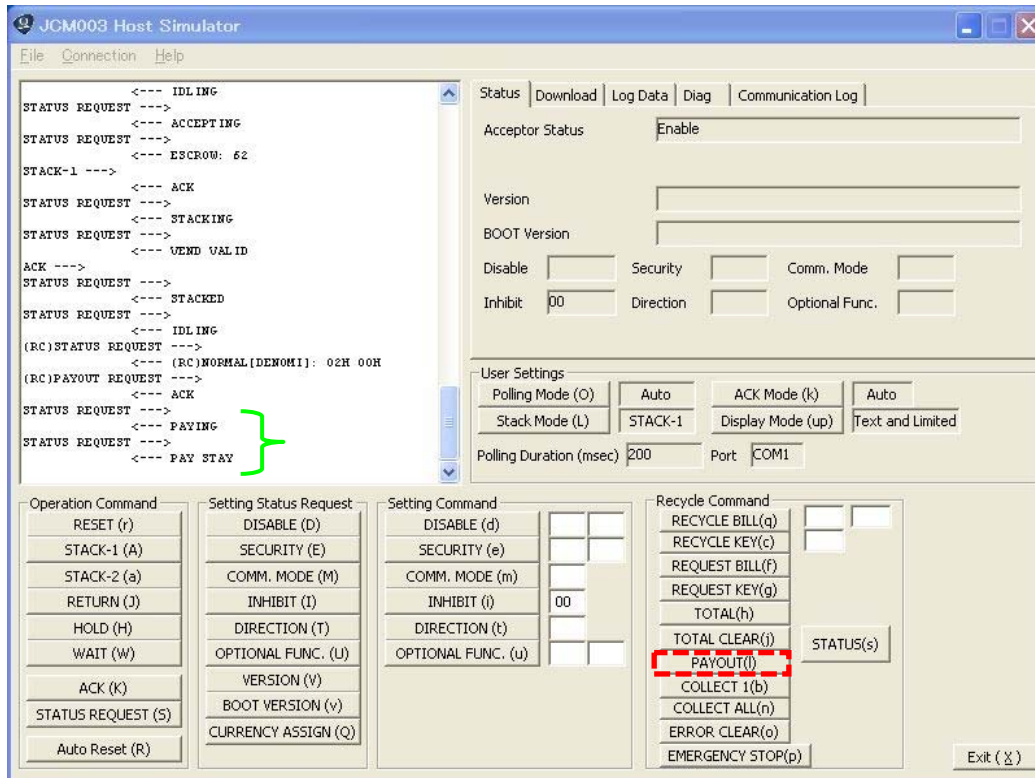
- (7) Confirm the denomination to be recycled, the enable status of the Recycler Key,  
[A] [B]  
and the total number of banknotes counted.  
[C]



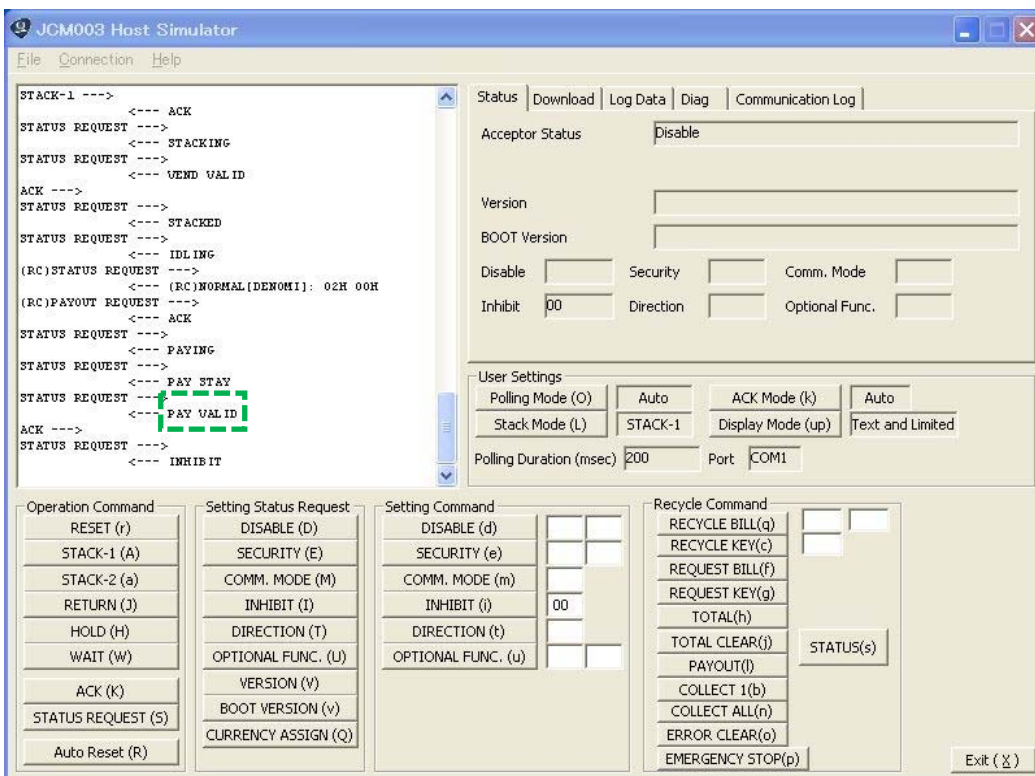


# [Dispense]

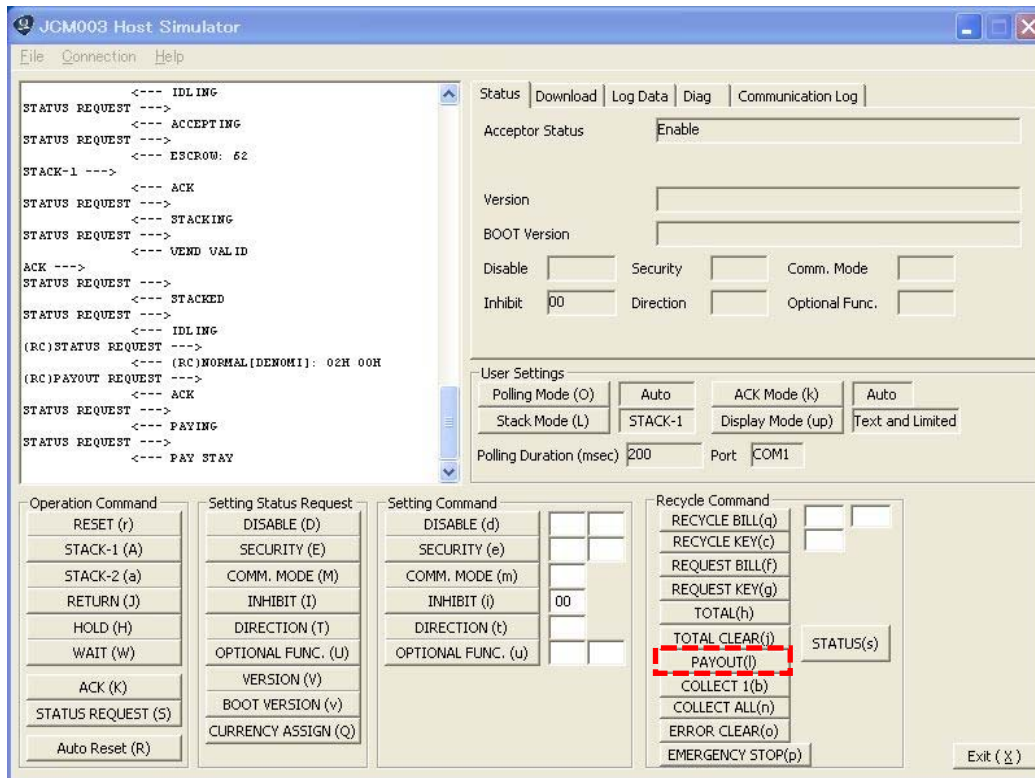
- (8) Press "PAYOUT" to dispense 1 banknote (the banknote stops at note entrance)



- (9) When the dispensed banknote is removed, VEGA sends "PAY VALID" command

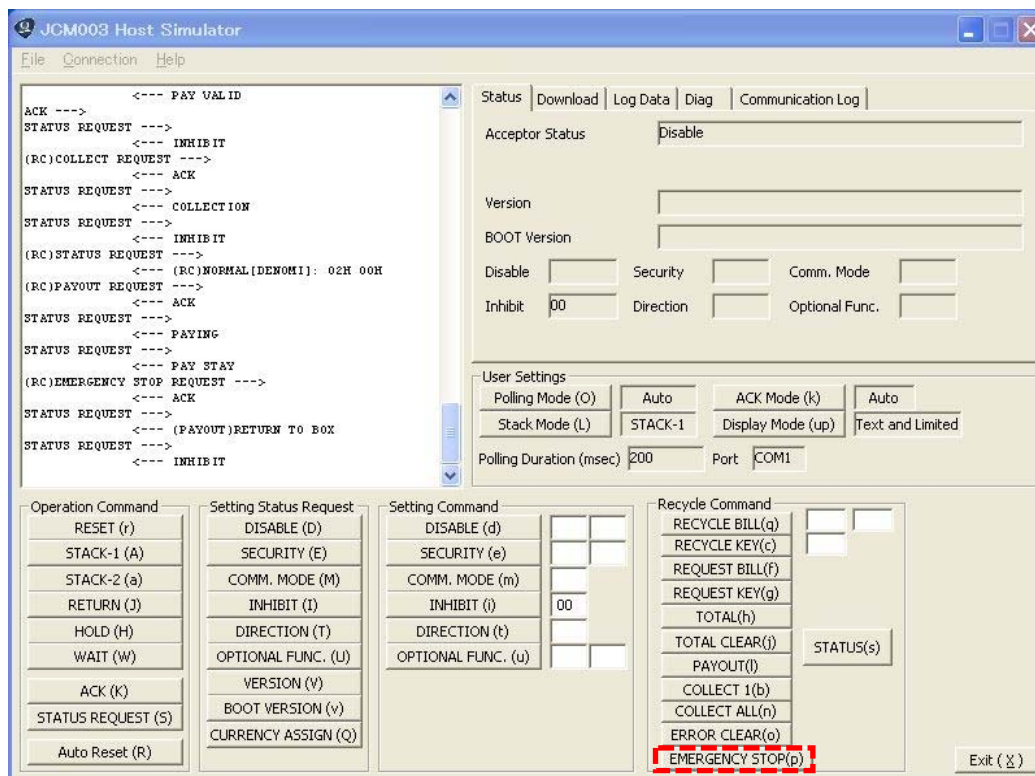


**[Collection of Dispensed Banknote] \*Emergency Stop Command**  
**(10) VEGA dispenses banknote (PAYOUT)**



The screenshot shows the JCM003 Host Simulator interface. The main window displays a list of commands and their status. The 'PAYOUT' command is highlighted in red. The 'Status' tab is selected, showing the 'PAYOUT' command as 'PAYOUT(I)'. The 'Recycle Command' section shows 'PAYOUT(I)' as the selected command. The 'Operation Command' section shows 'PAYOUT' as the selected command. The 'Setting Status Request' section shows 'PAYOUT' as the selected command. The 'Setting Command' section shows 'PAYOUT' as the selected command. The 'Recycle Command' section shows 'PAYOUT(I)' as the selected command. The 'Status' tab is selected, showing the 'PAYOUT' command as 'PAYOUT(I)'. The 'Recycle Command' section shows 'PAYOUT(I)' as the selected command. The 'Operation Command' section shows 'PAYOUT' as the selected command. The 'Setting Status Request' section shows 'PAYOUT' as the selected command. The 'Setting Command' section shows 'PAYOUT' as the selected command. The 'Recycle Command' section shows 'PAYOUT(I)' as the selected command.

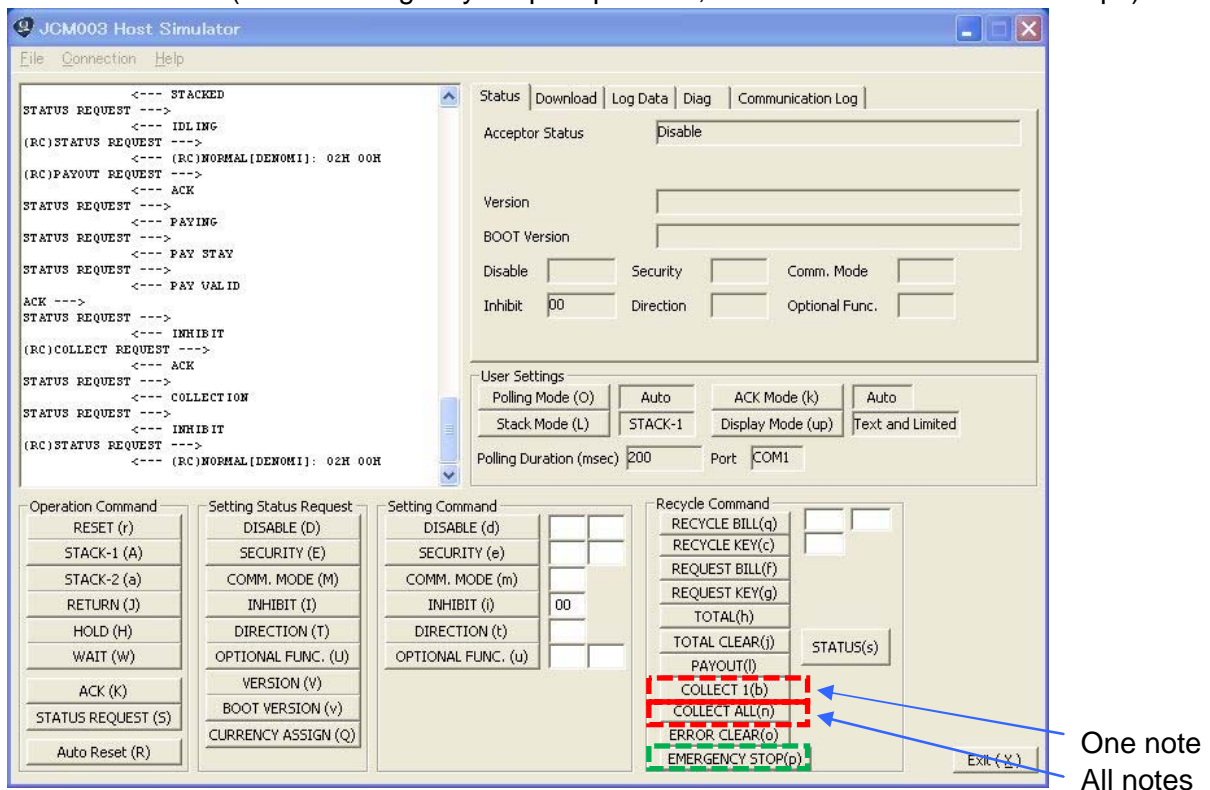
(11) When "Emergency Stop" button is pressed, the banknote is stacked into the Cash Box.



The screenshot shows the JCM003 Host Simulator interface. The main window displays a list of commands and their status. The 'EMERGENCY STOP' command is highlighted in red. The 'Status' tab is selected, showing the 'EMERGENCY STOP' command as 'EMERGENCY STOP(p)'. The 'Recycle Command' section shows 'EMERGENCY STOP(p)' as the selected command. The 'Operation Command' section shows 'EMERGENCY STOP' as the selected command. The 'Setting Status Request' section shows 'EMERGENCY STOP' as the selected command. The 'Setting Command' section shows 'EMERGENCY STOP' as the selected command. The 'Recycle Command' section shows 'EMERGENCY STOP(p)' as the selected command.

### [Collection to Cash Box]

- (12) When "COLLECT" button is pressed, the banknotes in VEGA-RC are transported to the cash box (when "Emergency Stop" is pressed, the collection to Cash Box stops).



- (13) When "STATUS" command is sent during the collection to the Cash Bo

[D]

VEGA sends the status of Recycler

[E]

